

CDM - DESIGN RISK INFORMATION

Provide this which we have not been asked design out and which others could not be reasonably expected to know about.

RISK DETAIL & STAGE	SUGGESTED CONTROL MEASURE	DESIGNER

No.	Description	Date

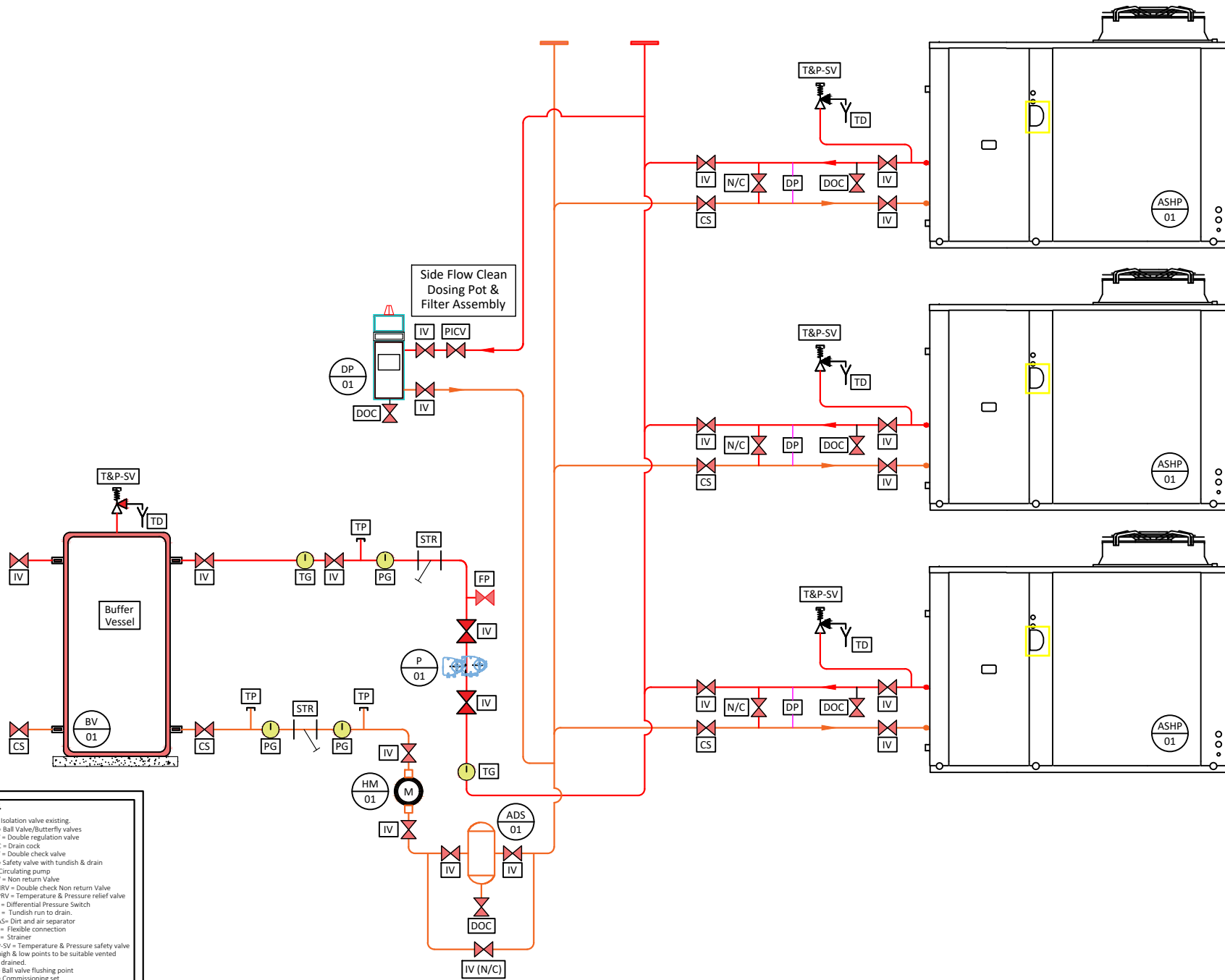
MAXA GAMMA  
i-290 HEAT PUMPS

CASCADE  
HEATING ONLY

Project number  
Date 09/07/2023  
Drawn by ESS  
Revision

ESS/MAXA 010

Scale NTS @ A3



- KEY:**
- IV = Isolation valve existing.
  - BV = Ball Valve/Butterfly valves
  - DRV = Double regulation valve
  - DOC = Drain cock
  - DCV = Double check valve
  - SV = Safety valve with tundish & drain
  - NRV = Non return Valve
  - DCNRV = Double check Non return Valve
  - T&PRV = Temperature & Pressure relief valve
  - DPS = Differential Pressure Switch
  - TD = Tundish run to drain.
  - D&AS= Dirt and air separator
  - FC = Flexible connection
  - ST = Strainer
  - T&P-SV = Temperature & Pressure safety valve
- All high & low points to be suitable vented and drained.  
F.P = Ball valve flushing point  
CS = Commissioning set