

CDM - DESIGN RISK INFORMATION

Permitted risks which we have not been allowed design out and which others could not be reasonably expected to know about.

RISK DETAIL & STAGE SUGGESTED CONTROL MEASURE DESIGNER

RISK DETAIL & STAGE	SUGGESTED CONTROL MEASURE	DESIGNER

No.	Description	Date

MAXA GAMMA  
i-290 HEAT PUMPS

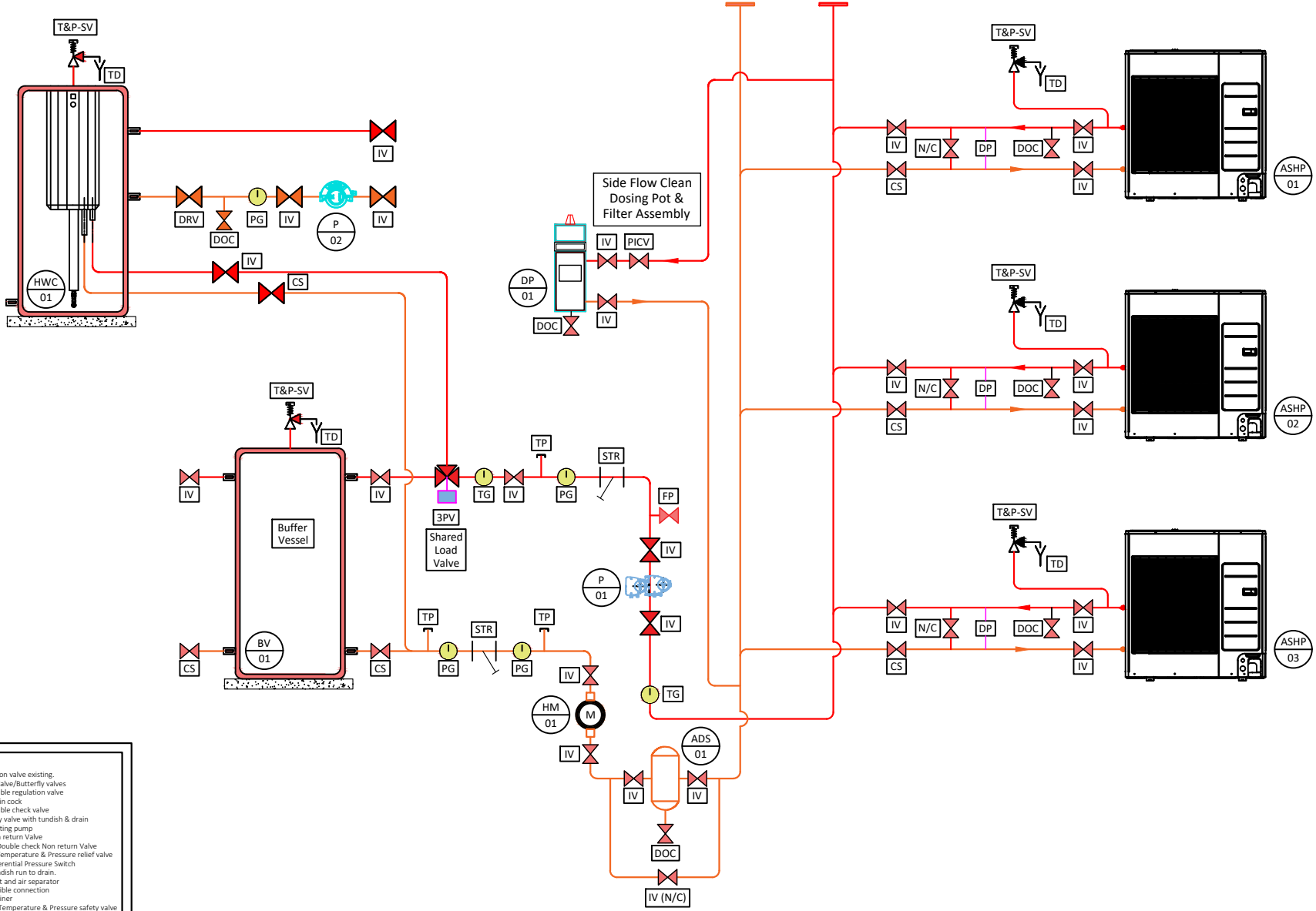
CASCADE  
HEATING AND HOT WATER

Project number  
Date 09/07/2023

Drawn by  
Revision

ESS/MAXA 005

Scale NTS @ A3



**KEY:**

- IV = Isolation valve existing.
- BV = Ball Valve/Butterfly valves
- DRV = Double regulation valve
- DOC = Drain cock
- DCV = Double check valve
- SV = Safety valve with tundish & drain
- NRV = Non return Valve
- DCNRV = Double check Non return Valve
- T&PRV = Temperature & Pressure relief valve
- DPS = Differential Pressure Switch
- TD = Tundish run to drain.
- D&AS= Dirt and air separator
- FC = Flexible connection
- ST = Strainer
- T&P-SV = Temperature & Pressure safety valve
- All high & low points to be suitable vented and drained.
- FP = Ball valve flushing point
- CS = Commissioning set